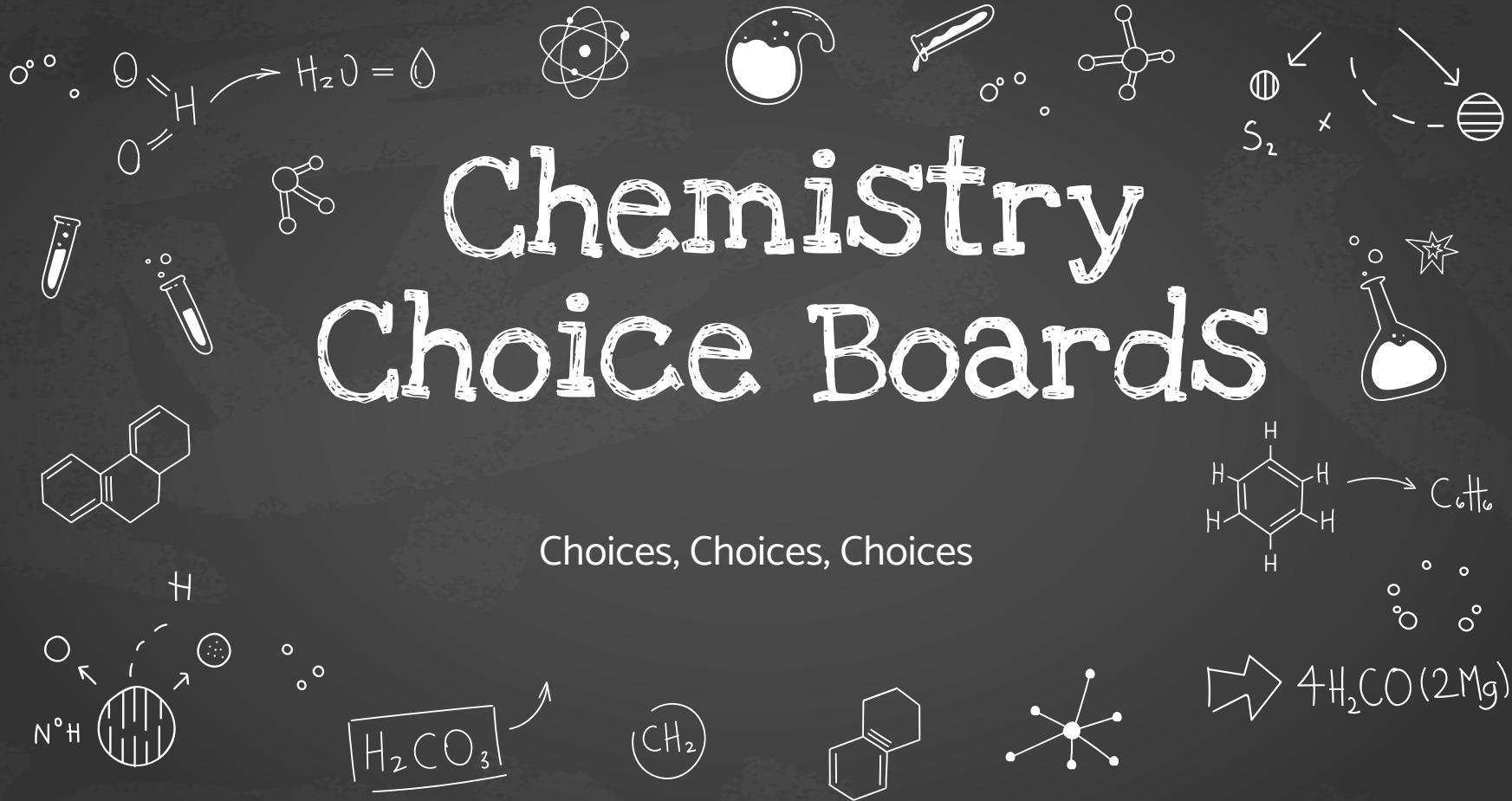
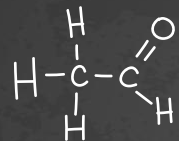
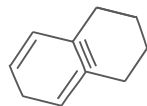


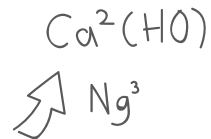
Chemistry Choice Boards

Choices, Choices, Choices





What is This?



This document describes the options that students can choose to demonstrate competency in each unit of this course. In order to qualify to take the Summative Assessment, all students must have completed a sufficient amount of options for that unit (as indicated by points). This document is a *living* document and will evolve over time.



$$a_{n+1} - a_n = 0_n$$



Table of Contents

$$\sqrt{2+a_n} = a_n$$

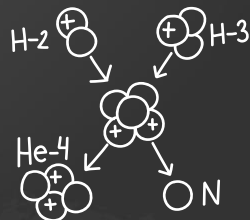
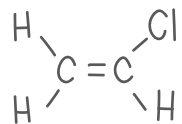


Work Standards

Completion Scale

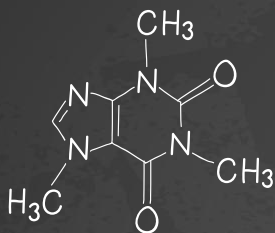
Unit 1: Matter & Measurement

Unit 2: Energy, Collisions & Gases



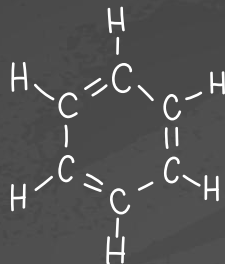
Work Standards

To be considered complete, the following standards must be met:



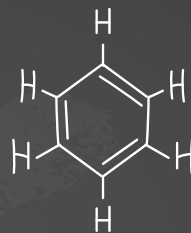
InfoDocs

- All Unit Videos are viewed in EdPuzzle (all prompts addressed)
- Acceptably Detailed InfoDocs (as per InfoCapture Guidelines)
- Submitted to K.



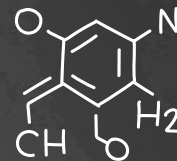
Application Packet

- All non-optional parts of the Application Packet are completed.
- Submitted to K.



WebAssign

- The WebAssign Questions are completed by the posted due date with a **score of $\geq 70\%$**
- Email a screenshot of your score to K.



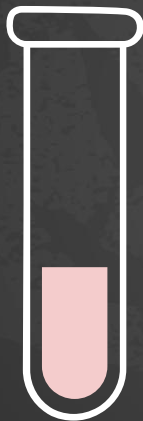
Sims & Pivots

- Complete the associated activity.
- Pivots: Email K. when you finish so he can score. **Required score $\geq 70\%$**
- Sims: Upload activity sheet to Drop & Email K.

Completion Scale

- Experience Point (XP) cutoffs per unit.

<60% of
Unit XP



Concern

- Summative can not be taken without parental consent note.
- Semester Behavior grade will reflect inconsistent effort.

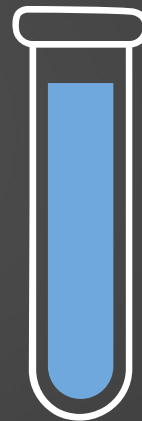
>60% of
Unit XP



Agreeable

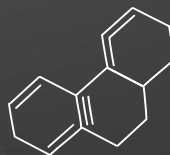
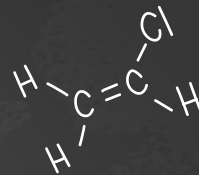
- Summative can be taken
- Semester Behavior grade is unaffected based on XP.

>90%



LEEB-Worthy

- Receive the **Limited Edition Expert Badge (LEEB)** for the Unit.





Unit 1: Matter & Measurement



Pivots:

Choices (class it "can" be done after):	XP:
1. Will it Float? (class 4) 2. Spot the Fake (class 4) 3. Density of Solids (class 3) 4. Introduction to Measurement (class 2)	0.5 XP each.

SimS:

1. <u>Density Laboratory</u> (class 4) 2. <u>Chemical Changes</u> (class 6)	0.5 XP each.
--	--------------

Ground Work:

<u>InfoDocs*</u> (schedule on Agenda)	<u>Application Packet</u> (schedule on Agenda)	<u>WebAssign</u> (due 23.8)	1 XP each.
--	---	--------------------------------	------------

Total XP:

6

{ Concern (<3.5)
 Agree (>3.5)
 LEEB (5.5) }

* Denotes **MANDATORY** "choice"

